

The logo for Benware CERAMIK is centered on a background of a light beige, textured surface that resembles natural stone or ceramic. The word "Benware" is written in a large, bold, dark blue sans-serif font, with a registered trademark symbol (®) to its upper right. Below "Benware", a thin horizontal line spans the width of the text. Underneath this line, a small house icon is positioned to the left of the word "CERAMIK", which is written in a smaller, dark blue, all-caps sans-serif font.

Benware[®]
—  — CERAMIK

The background of the advertisement is a grid of ceramic tiles. On the left side, there is a vertical strip of decorative tiles with a repeating floral and scrollwork pattern in black, white, and beige. The rest of the grid consists of plain, light beige rectangular tiles. The tiles are arranged in a grid pattern with visible grout lines.

Benware[®]
— 𓀀 — CERAMIK

Benware[®]
CERAMIK



**GIVE YOUR
SPACE A TOUCH
OF SHEEN**

300x600

The image displays a repeating pattern of rectangular stone tiles. Each tile has a natural, weathered appearance with a mix of earthy tones including tan, beige, and grey. The surface of the tiles is uneven, with visible veins and small pits, characteristic of natural stone. The tiles are laid in a standard grid pattern with thin, dark grey grout lines.

R U S T I C
3 0 0 x 6 0 0



40033-D

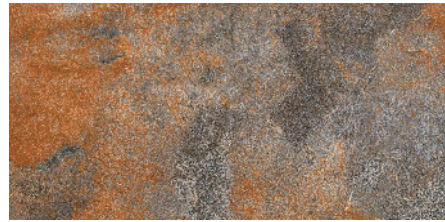
R U S T I C
3 0 0 x 6 0 0

Benware[®]
CERAMIK



40033-D
(20 Random piece Available)

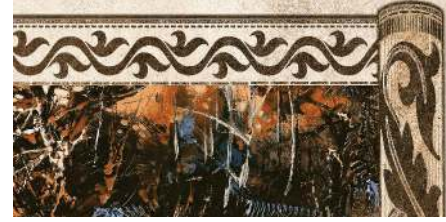
R U S T I C
3 0 0 x 6 0 0



30006
(Random Pieces Available)



30001
(Random Pieces Available)



40018-L
40018-P1 (RANDOMS)
40018-P2
40018-D
(Random Pieces Available)



R U S T I C

3 0 0 x 6 0 0



40009-L
40009-D
(Random Pieces Available)

40010-L
40010-P1

40010-P3
40010-D

F L A M B O Y A N C E



40012-L
40012-H1
40012-H2
40012-D

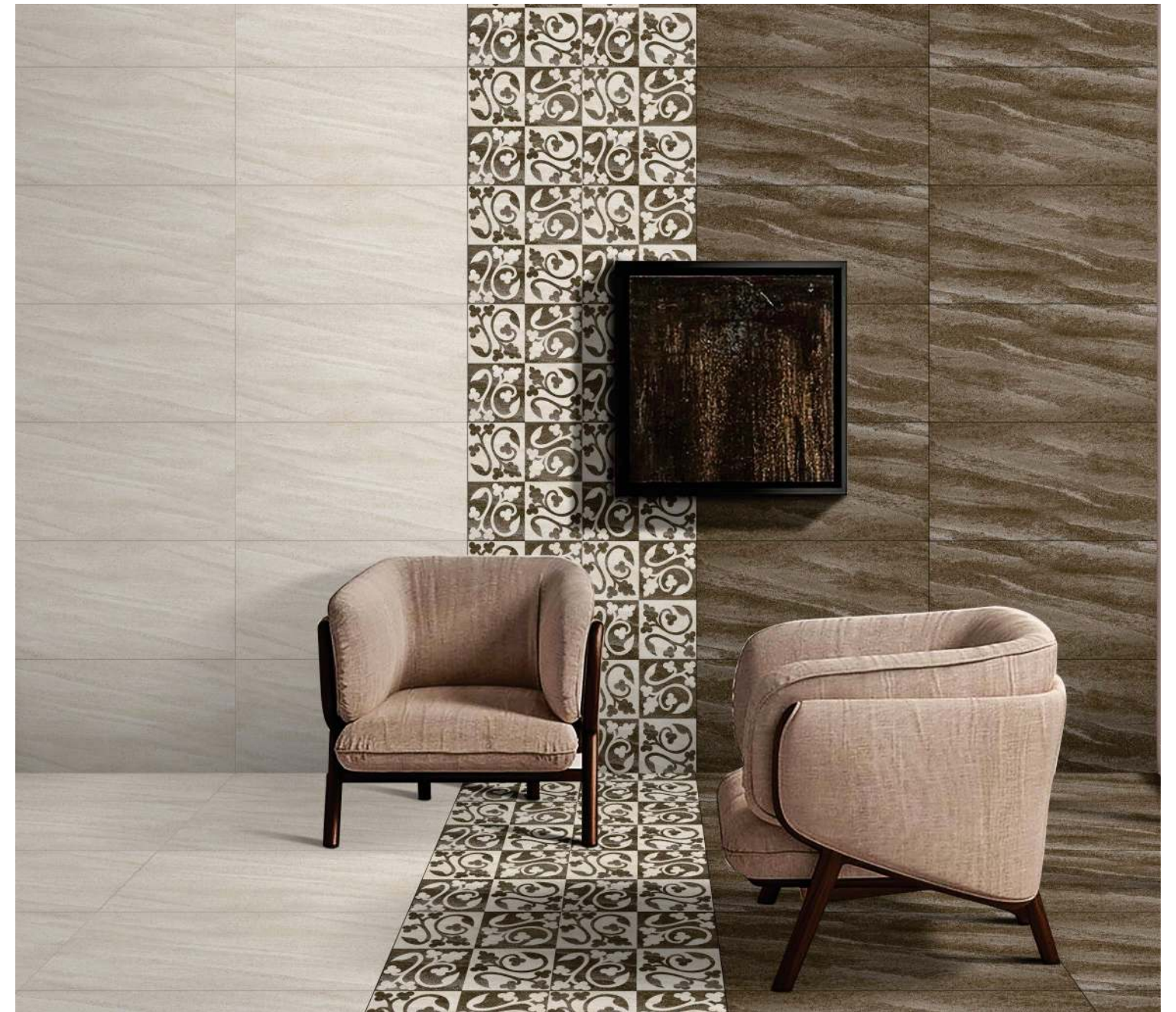
R U S T I C
3 0 0 x 6 0 0

Benware®

CERAMIK



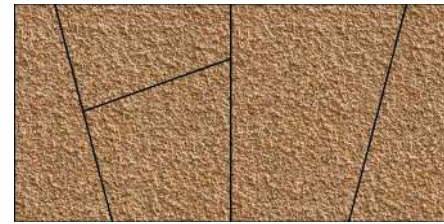
40013-L
40013-P2
40013-P3
40013-H4
40013-D



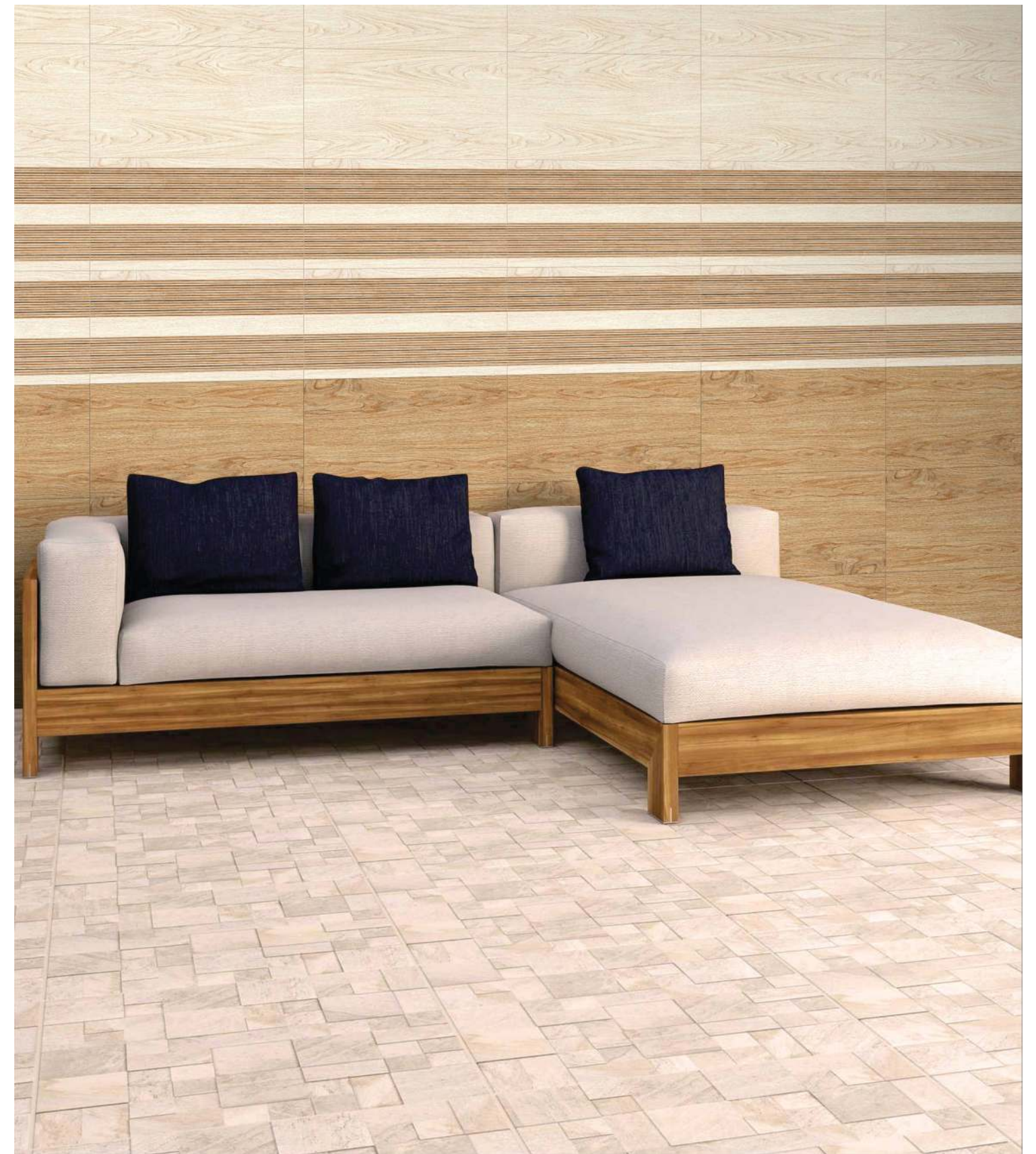
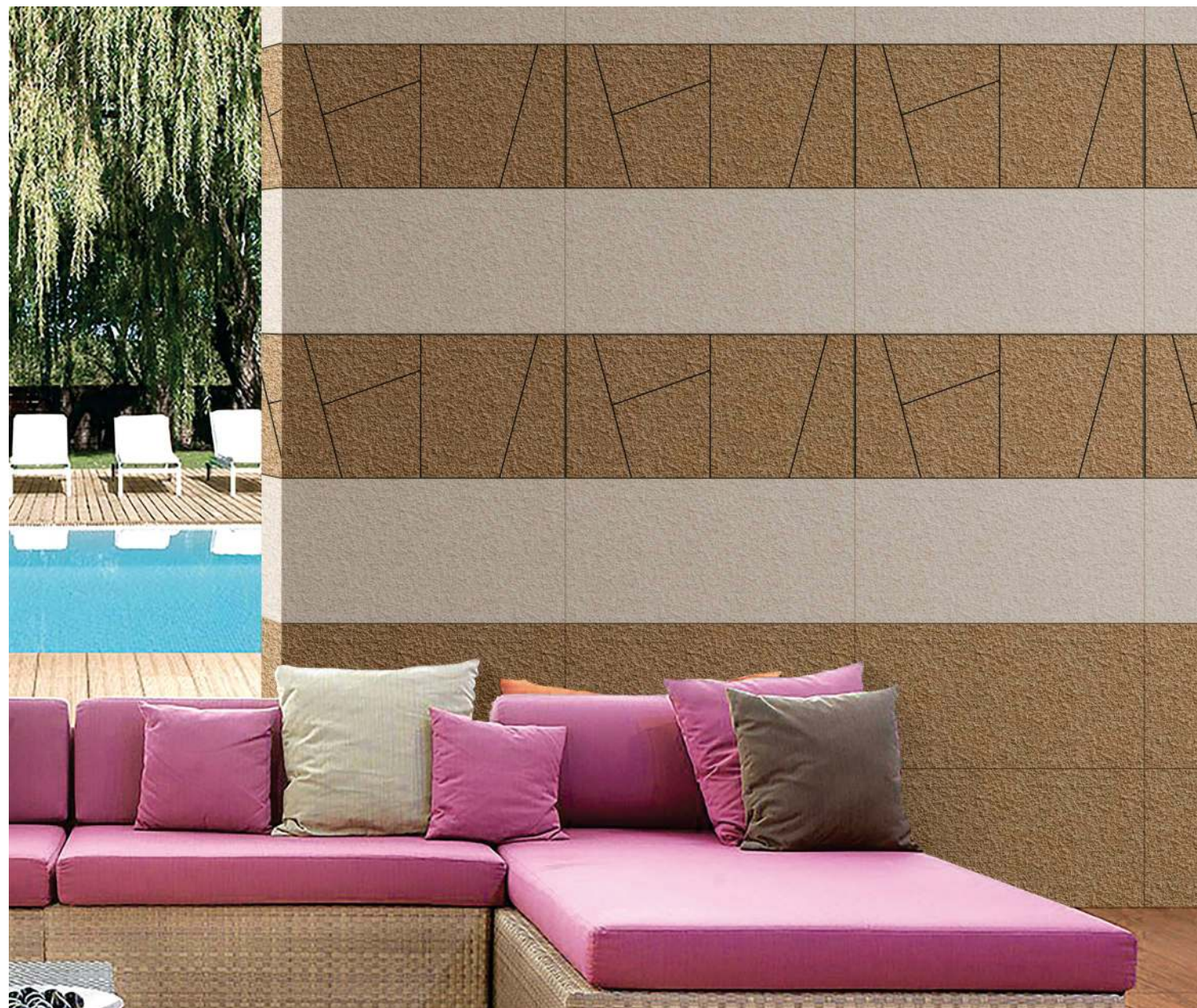
40017-L(RANDOMS)
40017-P3(RANDOMS)
40017-H2
40017-K1
40017-P1
40017-P2
40017-D(RANDOMS)

R U S T I C
3 0 0 x 6 0 0

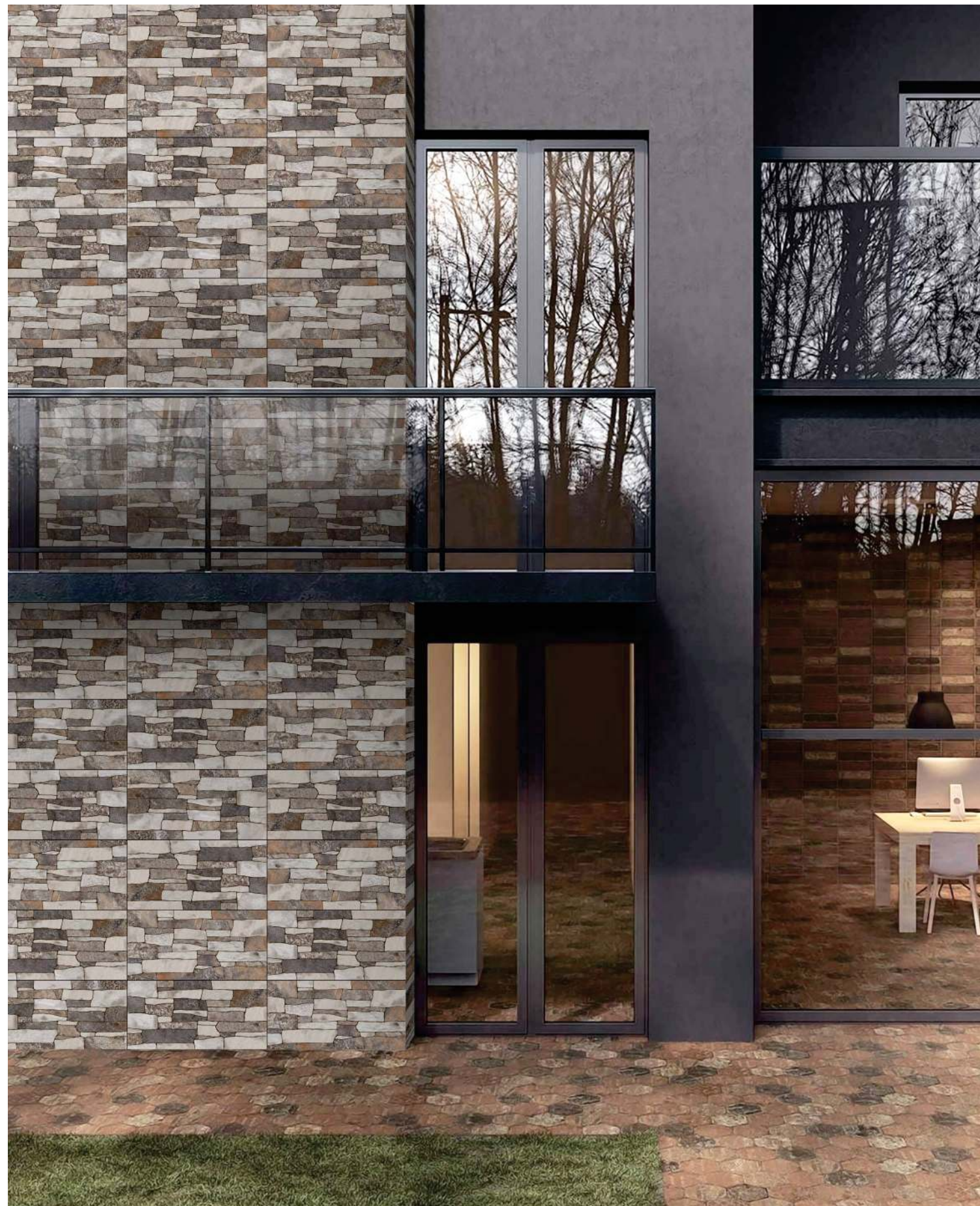
Benware[®]
CERAMIK



40024-L
40024-H1
40024-D



40011-L
40011-H1
40011-D



30026
30027

G L I T T E R

Benware®
CERAMIK

R U S T I C
3 0 0 x 6 0 0



30018
30019



R U S T I C
3 0 0 x 6 0 0



30012
30013



30015
30034





30009 (RANDOMS)
30010 (RANDOMS)

G L I T T E R

Benware[®]
— CERAMIK

R U S T I C
3 0 0 x 6 0 0



30035
30011



R U S T I C
3 0 0 x 6 0 0

Benware®

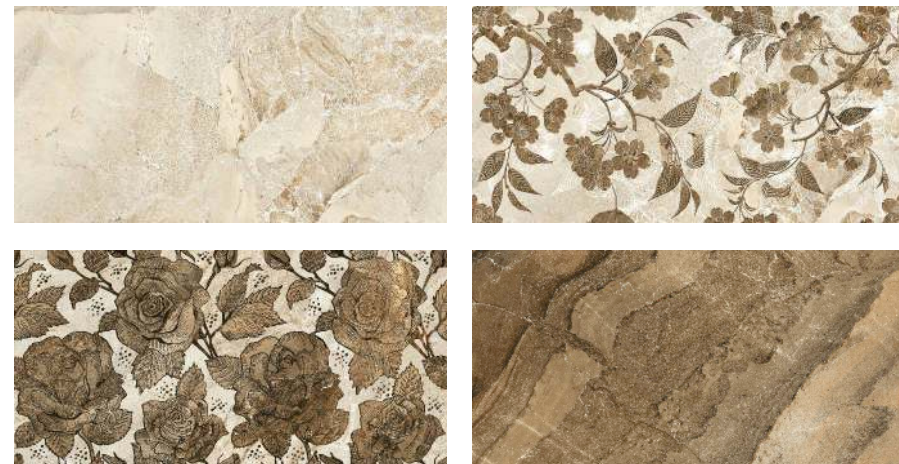
CERAMIK



40002-L
40002-P1
40002-D
(Random piece Available)



30043
30043-H1
30043-H2



40022-L
40022-P1
40022-P3
40022-D
(Random piece Available)

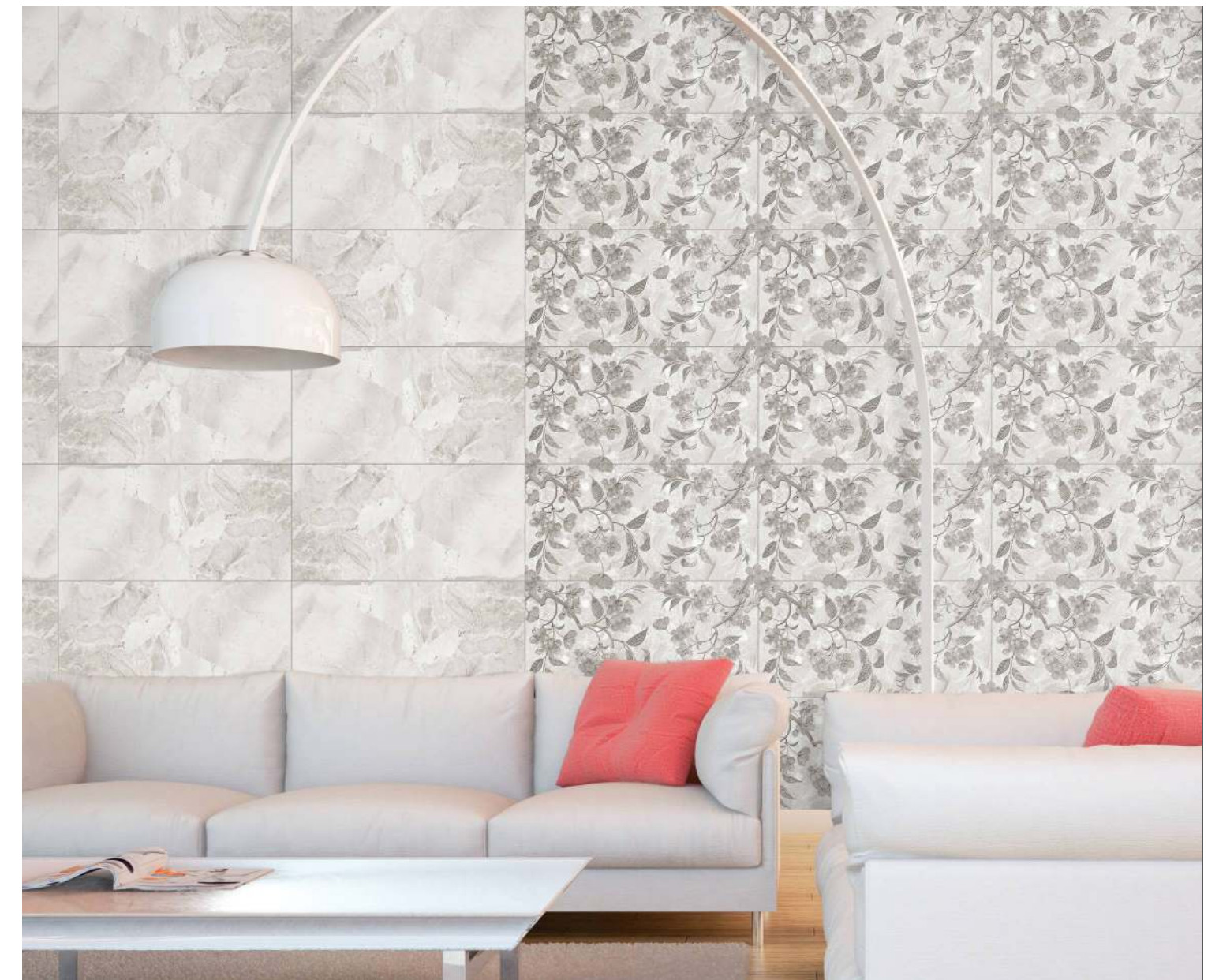
Benware[®]
CERAMIK

R U S T I C
3 0 0 x 6 0 0



40028-L
40028-P1
40028-P2
40028-H2

G L I T T E R



Benware®

CERAMIK

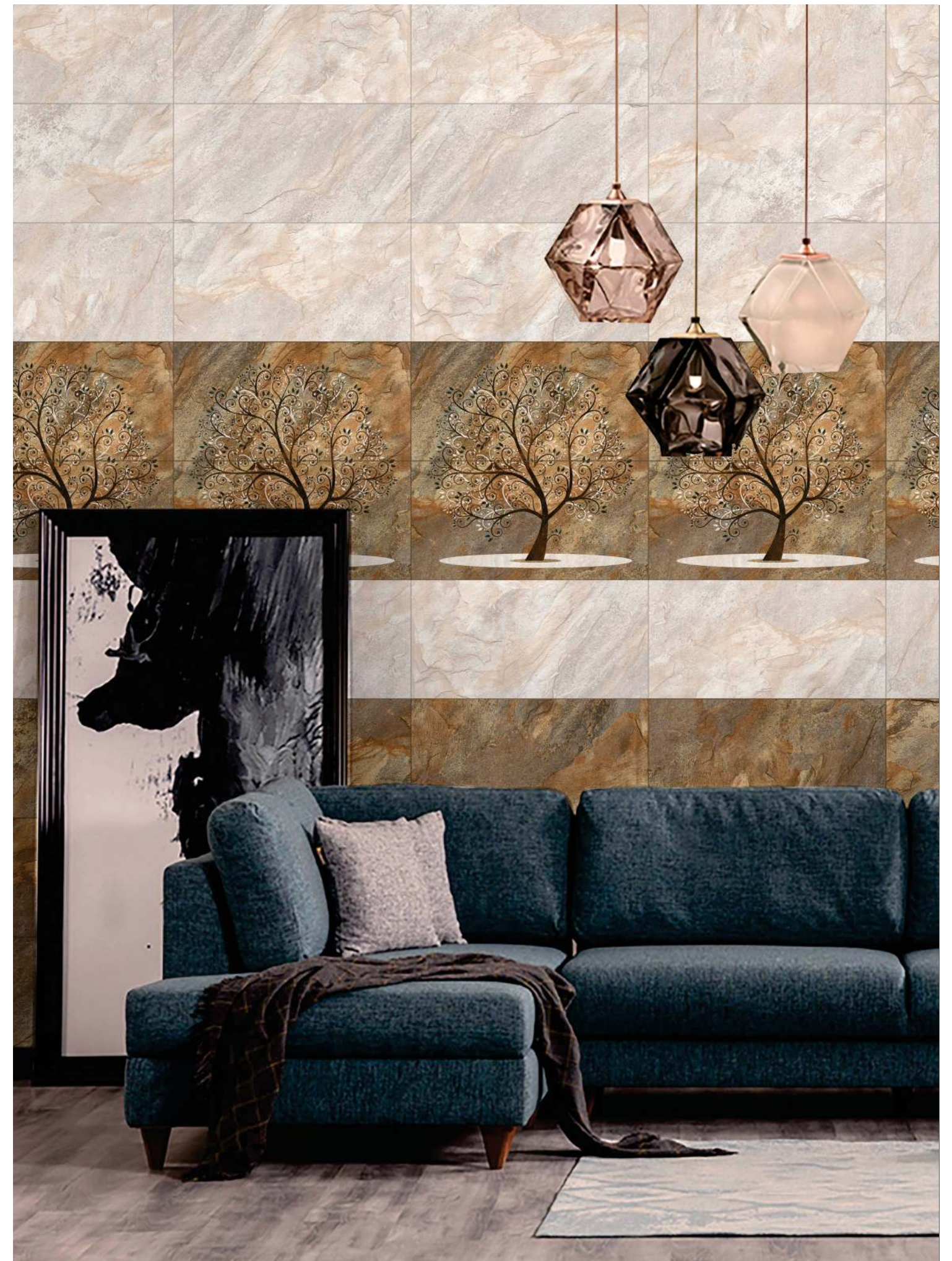
R U S T I C
3 0 0 x 6 0 0



40025-L
40025-P9(RANDOM)
40025-P2(A)
40025-P2(B)

F L A G S T O N E

40025-P1
40025-H1
RUSTIC PIC-1
RUSTIC PIC-3
40025-D



40025-D

R U S T I C
3 0 0 x 6 0 0



40027-L
40027-H1
40027-D

40031-L
40031-H1
40031-D



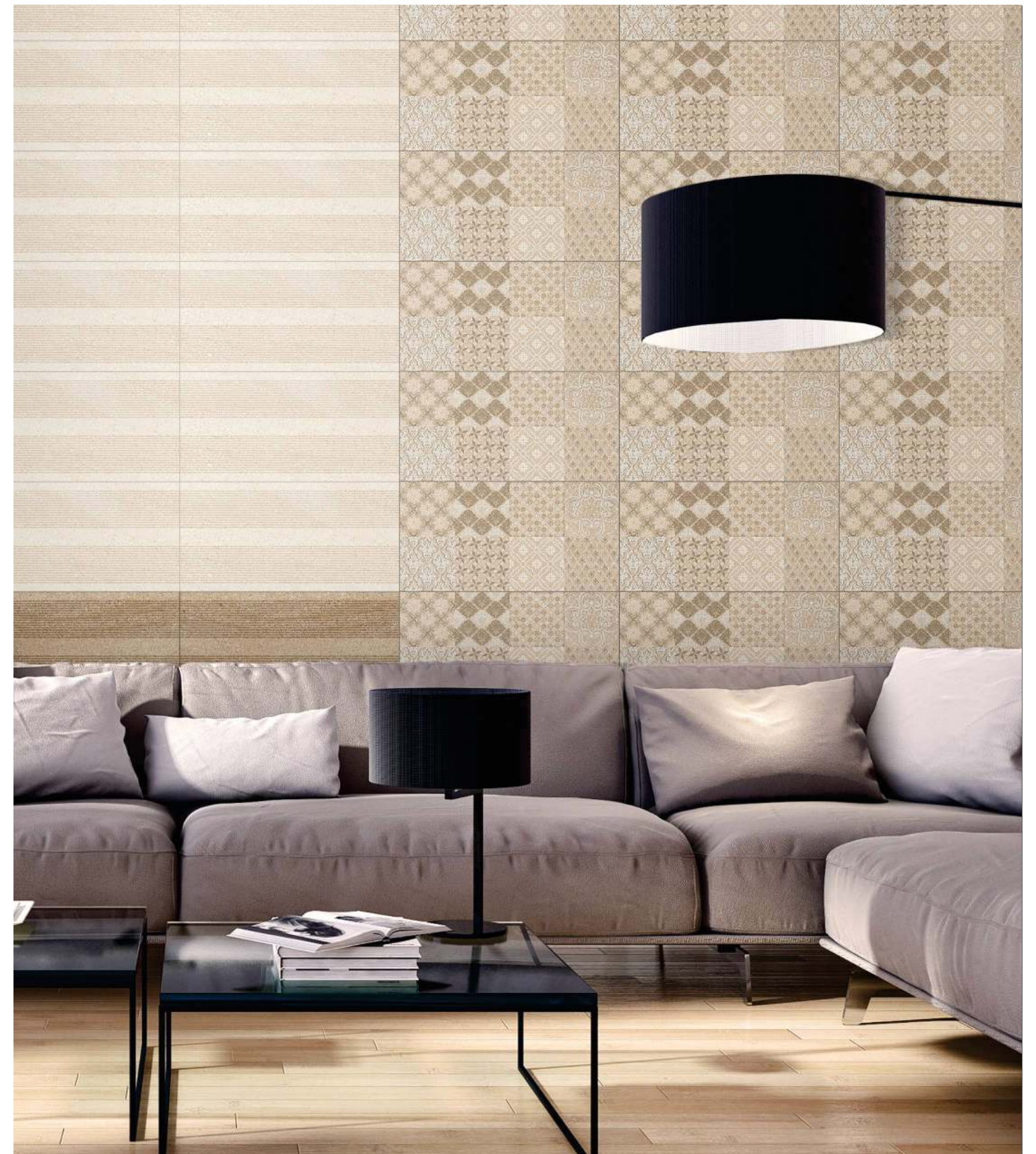
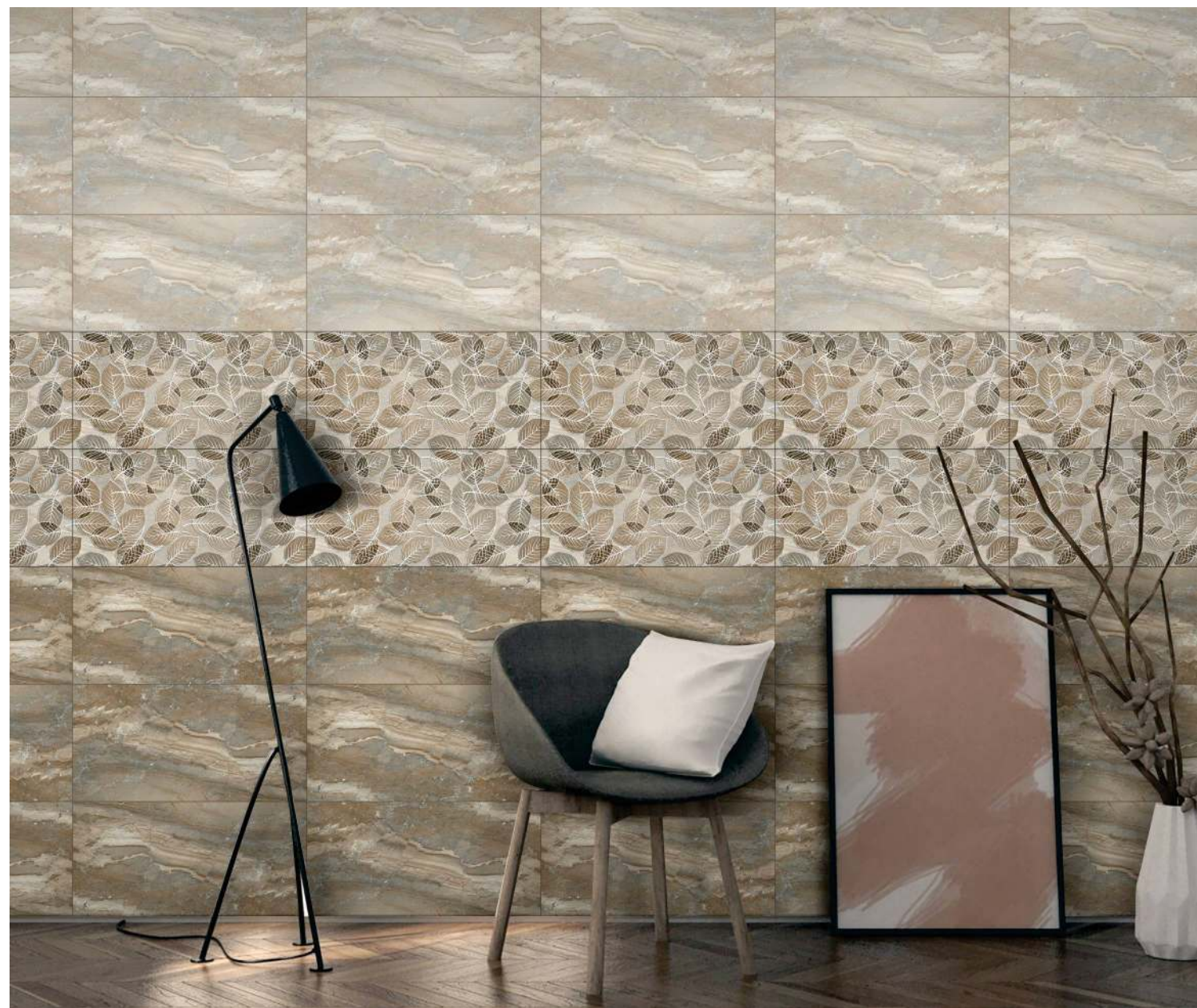
R U S T I C
3 0 0 x 6 0 0

Benware[®]

CERAMIK



40023-L
40023-P1
40023-D



40036-L
40036-H1
40036-D



R U S T I C
3 0 0 x 6 0 0

40037-L
40037-H1
40037-D



40032-L
40032-H1
40032-P1
40032-D
(Random Pieces Available)

R U S T I C
3 0 0 x 6 0 0

Benware®

CERAMIK



40038-L
40038-H1(RANDOM)
40038-D
(Random Pieces Available)

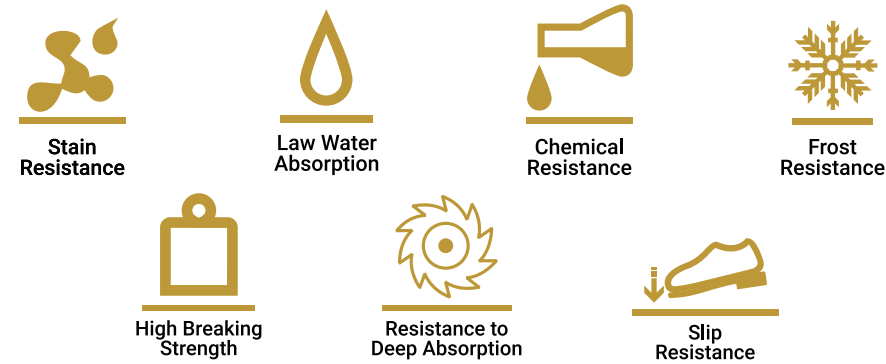


40040-L
40040-H1
40040-D
(Random Pieces Available)



R U S T I C
3 0 0 x 6 0 0

Technical Specifications



Applications



PACKING DETAILS

Size	Thickness (approx)	Tiles / Box	Coverage Area / Box	Wt. of Box (approx)
300x600mm	9 mm	5 pcs.	0.90 sq. mtr.	14.5 kgs.

Note:

1. Certain amount of size and shade variation is inherent in all ceramic products
2. Our conformity to the above Fast is applicable only for Quality.
3. Colour show are as accurate as the limitations of the printing process will allow. Prospective customers are advised to inspect a sample of the tile before ordering. Every effort has been made to ensure the accuracy of the information given. However the company reserve the right to change the specification without prior notice. Sometimes variations in shade or size being inherent to ceramic industry may occur it is suggest to check the tiles before purchase any laying as the company dose not accept responsibility once tiles are laid.

Technical Specifications

CHARACTERISTICS	EURO STANDARDS EN - 159/IS 13753	LAVISH VALUE
-----------------	----------------------------------	--------------

DIMENSION & SURFACE QUALITY

1) Dimension & Surface Quality	+0.5%	+0.4%
2) Deviation in Thickness	+0.6%	+0.3 mm
3) Straightness of sides	+0.3%	+0.2%
4) Rectangularity	+0.5%	+0.3%
5) Surface Flatness	+0.5%	+0.3%
6) Surface Quality	Min.95%	Min.96%

PHYSICAL PROPERTIES

1) Water Absorption	> 10%	12-15%
2) Bending Strength	> 150 kg./cm2	150-180 kg./cm2
3) Scratch hardness (Mohs)	Min 3	Min 3
4) Crazeing	1 Cycles	No Crazeing at 4 Cycles

CHEMICAL PROPERTIES

1) Staining Resistance	Min Class 2	Resistance to all Acids & Alkalies & Household Chemicals, except Hydro Flouric Acid
2) Household Chemical	Min Class B	

THERMAL PROPERTIES

1) Thermal Shock	Resistant to 10 Cycles	CONFORMS
2) Thermal Expansion	Max. 9E-06	CONFORMS

The logo for Benware CERAMIK is centered on a background of a light beige, textured ceramic surface with natural veining and some darker spots. The word "Benware" is written in a large, bold, black sans-serif font. A registered trademark symbol (®) is positioned at the top right of the word. Below "Benware", there is a thin horizontal line. Underneath this line, a small house icon is centered, followed by the word "CERAMIK" in a smaller, black, all-caps sans-serif font.

Benware[®]
—  — CERAMIK